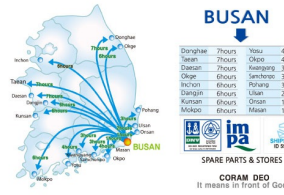




Spare Parts Transfer

1. We pick up the spare parts to the all port and customer warehouse by ourselves but the agent arrange the job through forwarding companies, paying up the spare parts forwarding companies main job to their agent handling charge.
2. When sample handle, important documents from container or publications are sent us by DHL or FedEx, we deliver them without charge but the agent and forwarding companies take US\$ 60 per case as delivery charge.
3. When we are requested to deliver a spare part from A vessel to B vessel, there's no reception charge. We have a approximately 300sqm warehouse on the other hand, forwarding companies or agent has to keep the parts in their warehouse as the charge has to be imposed.
4. We can transport the spare parts up to 10 tons with our own trucks so you can save much handling charge. In case of 1 ton or less, we can forward forwarding companies or agent to save a sea truck for transportation from customer warehouse to a vessel. The minimum charge of \$ 200 happens and they don't have their own warehouse so they take out spare parts from a customer's warehouse when the vessel call. They don't like to return back freely and there's any extra, more charges happen.
5. We control stores and spare together so owners can handle the job easily. Therefore, we usually get orders and transfer spare parts with the lowest charge.



BUSAN
 Daejeon 7hours, Seoul 4hours, Incheon 4hours, Gwangju 7hours, Suwon 7hours, Ulsan 7hours, Daegu 7hours, Gyeongju 7hours, Pohang 7hours, Masan 7hours, Mokpo 7hours, Jeonju 7hours, Daejeon 7hours, Seoul 4hours, Incheon 4hours, Gwangju 7hours, Suwon 7hours, Ulsan 7hours, Daegu 7hours, Gyeongju 7hours, Pohang 7hours, Masan 7hours, Mokpo 7hours, Jeonju 7hours.

There's more, Best Delivery, Best Service!
 This is the customer mind that Universal Marine Service Co., Ltd. pursues heading toward World Wide Engine Spare Part Net. It is also doing the best to give satisfaction to customers through the worldwide network, in anywhere, anytime.



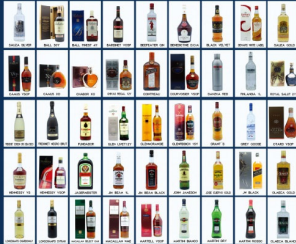
UNIVERSAL MARINE SERVICE CO., LTD.
 STORES & SPARE PARTS SUPPLY
 #02-51-417-9927 FAX #51-417-9911-9944
 www.unsma.co.kr

- ◆ SPARE PARTS
- ◆ GENERAL SHIP'S STORES
- ◆ PROVISION & BONDED STORES
- ◆ SPARE PARTS TRANSFER



UNIVERSAL MARINE SERVICE CO., LTD.

ALCOHOL



CIGARETTE



UNIVERSAL MARINE SERVICE CO., LTD.



Universal Catering

is established for better price, service, quality and prompt delivery by starting business with your good company. We are promise the Best Prices! Best Quality! Best Delivery! We are the Biggest Dealer who have highest stock in Korea.



UNIVERSAL MARINE SERVICE CO., LTD.

HYUNDAI, STX, DOOSAN FOUR STROKE DIESEL

B & W L27/38, L-V 32/40
 MARINE GENERATOR: L16/24, L23/30(H), L27/38, L28/32(H), L-V 32/40, L32/40CS
 DUAL FUEL ENGINE : L-V 32/40 DG

PUMP TAIKO KIKAI, NANIWA, HEISHIN, SHINKO KINZOKU
 SASAKURA, TEIKOKU, ISHI, KAWASAKI



UNIVERSAL MARINE SERVICE CO., LTD.

DIESEL ENGINE SPARE PART OF JAPAN MAKER

MAIN ENGINE: MITSUBISHI, HANSHIN, AKASAKA
 GENERATOR ENGINE: YANMAR DIESEL, DAIHATSU DIESEL
 PURIFIER: MITSUBISHI
 COMORESSOR: YANMAR MATSUBARA, TANABE, SANIWA, HASEGAWA

DIESEL ENGINE SPARE PART OF KOREA MAKER

HYUNDAI, STX, DOOSAN TWO STROKE DIESEL
 B & W: K90MC, K90MC-C, S90MC-C, K50MC-C, S50MC-C, S50MC, K80MC-C, S70MC-C, S70MC, L70MC-C, S60MC-C, S60MC, S50MC-C, S50MC, S66MV-C, S42MC, S35MC, L35MC



UNIVERSAL MARINE SERVICE CO., LTD.

